

Mogli User Sheet *Version 2*

1. Starting Mogli

1. Make sure the power (“Netz”) is connected to a 380V plug socket and all devices are switched on.
2. Make sure the high-pressure-pipe is connected on the local high-pressure system
3. Make sure all the vacuum parts are well connected and the manual flood valves are closed
4. If the main switch is on (5F0) the FPS-display should show *PST OFF, HV LOCKED*.
5. Check high vacuum pressure (dual gauge, CH2) and decide wheter to UNLOCK HV or not (F4, F3).
6. The recipient will be evacuated relatively fast. For evacuating slowly (fragile windows) install an additional fine-adjust-valve between Pirani Gauge (GP) and Turbopump (HP).
7. Press PST ON (F1) to start Mogli.



Bollrath-FPS

2. Mogli running

1. While Mogli is running observe the dual gauge for measured pressure, Turbo Control Unit (TCU) for turbo indicators and FPS-display for messages from the controller (table: FPS-Indicators).
2. To change the turbopump to standby-mode use the TCU frontpanel.
3. To change recipients or open extern valves while Mogli is running: lock HV!
4. Never use the manual flood valves (FV, FVHP) or the manual switches of pneumatic valves (VV, UV, HV) without well-instructed staff and reading carefully the documentations of Mogli.

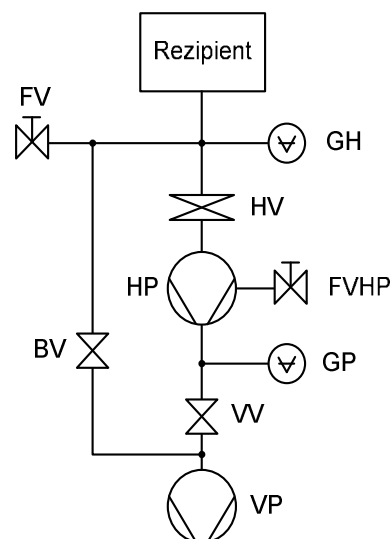
IN (green LED)	
I 01	HP ok.
I 02	HP 80%
I 03	VP run
I 04	VV open
I 05	VV closed
I 06	BV open
I 07	BV closed
I 10	HV open
I 11	HV closed
I 14	VP at speed

OUT (red LED)	
O 02	HP on
O 03	VP on
O 06	open VV
O 07	open BV
O 09	open HV
O 11	GP < 0.1mbar
O 12	GH < 1mbar

3. Errors

You can find the full version of how to fix an error in the documentations. The FPS shows errors on the display as textmessages successively.

1. FPS shows wrong display text → load FPS-program “Mogli_v2.fps” from a computer to FPS.
2. VP ERROR → VP not at speed after 30s. Check wiring, let VP run separately (ext. power)
3. HP ERROR → No feedback HP ok. After 30s. Check wiring and TCU.
4. START TIME ERROR → GP > 0.1mbar after 10min. Check Pirani Gauge and vacuum-connections up to HV.
5. RECOVERY TIME ERROR → GP > 0.1mbar after 1h. when HV open. Recipient Volume could be to big. Make sure FV and FVHP are closed. Check GP and GH.
6. INGRESS OF AIR → GH > 1mbar when HV has been open. Leak in the vacuumsystem!
7. GAUGE ERROR GP/GH → wrong input-voltage from dual gauge. Check wiring and Gauges.
8. COMPRESSED AIR ERROR → Valves don’t react. Check high-pressure connections.



If you fixed an error press ERROR RESET (F5). If the problem is solved the error message doesn't appear anymore.